






57 Dickson Street Sunshine VIC

4  2  6 

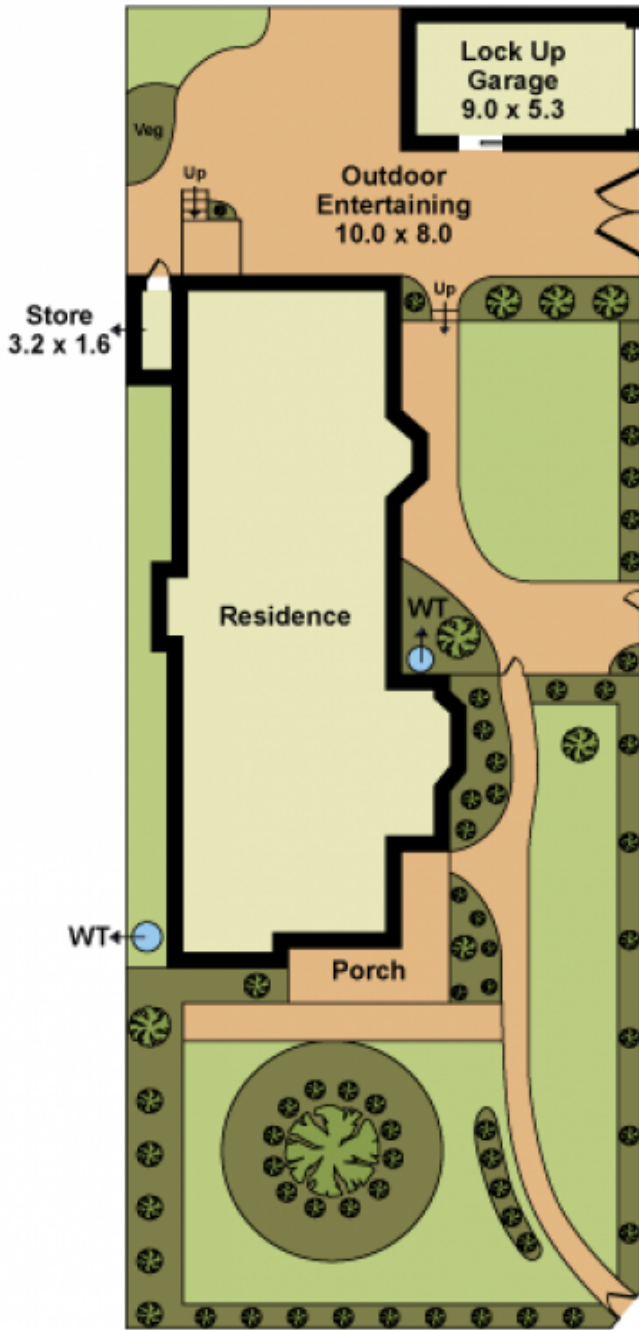
A textbook example of an embellished and ornate Californian built in 1927, with sweeping veranda, gable roofs, high ceilings, decorative ceilings, fireplaces, and lead light glass. The home itself has undergone a significant extension to now accommodate large family living with 4 bedrooms, 2 bathroom, multiple family sized living areas and a manicured landscape - all with perfect detail and character in a true federation style. Modern features include lock up garage, ducted heating, air-conditioning throughout, alarm, gas appliances and more.

Walking distance to all major key amenities including Sunshine Train Station, future "Super Hub" - a landmark project that will reinvent Brimbank as a thriving economic transport and employment centre linking the CBD, outer

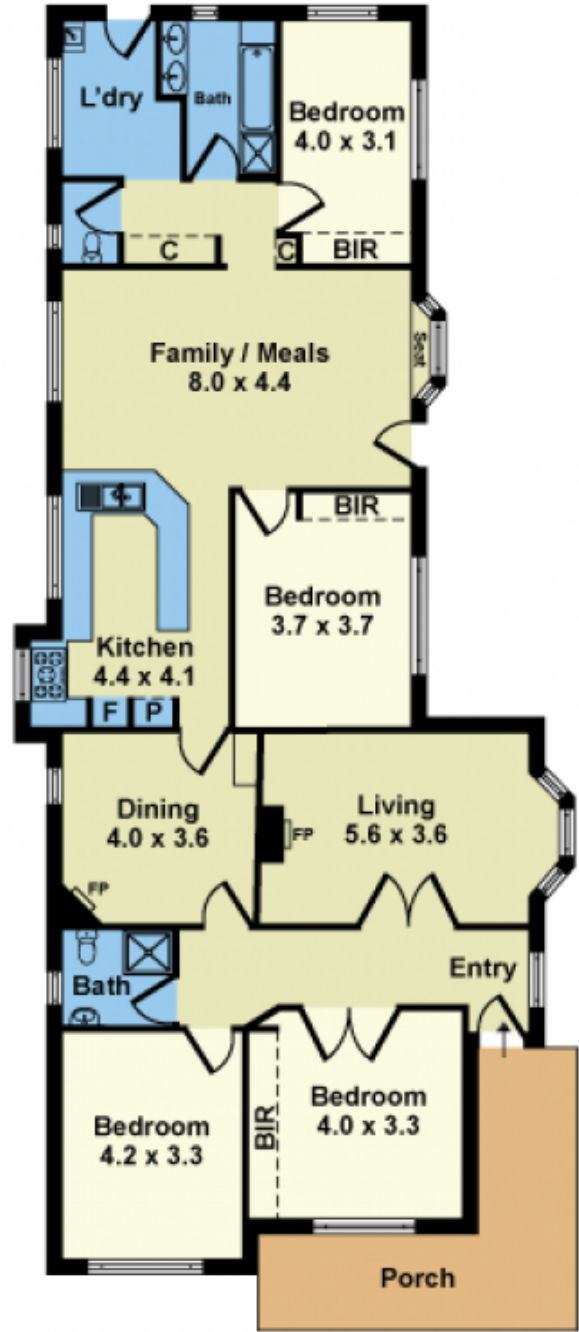
Type : House

View : <https://www.douglaskay.com.au/lease/vic/west/sunshine/residential/house/7269938>

[For full version visit the website](https://www.douglaskay.com.au/lease/vic/west/sunshine/residential/house/7269938)



SITE PLAN



FLOOR PLAN

Whilst every attempt has been made to ensure the accuracy of this floorplan, measurements of doors, windows, rooms and any other items are approximates only. The producer or agent cannot be held responsible for any errors, omissions or misstatements. This plan is for illustrative purposes only and should be used as such.