



### 6 Carrington Drive Albion VIC

- Building Area 472m<sup>2</sup>\* plus steel Mezzanine floor.
- Hardstand area 850m<sup>2</sup>\*.
- Total Land area 1687m<sup>2</sup>\*.
- High spanning ceiling.
- Ideal Construction Depot / Storage / Trucking / Machine Storage etc.
- Sliding door access from side and rear of warehouse.
- Easy Western Ring Road Access.

**Type** : Industrial  
**Building Size** : 1322 sqm  
**Land Size** : 1687 sqm  
**View** : <https://www.douglaskay.com.au/lease/vic/west/albion/commercial/industrial/7286949>

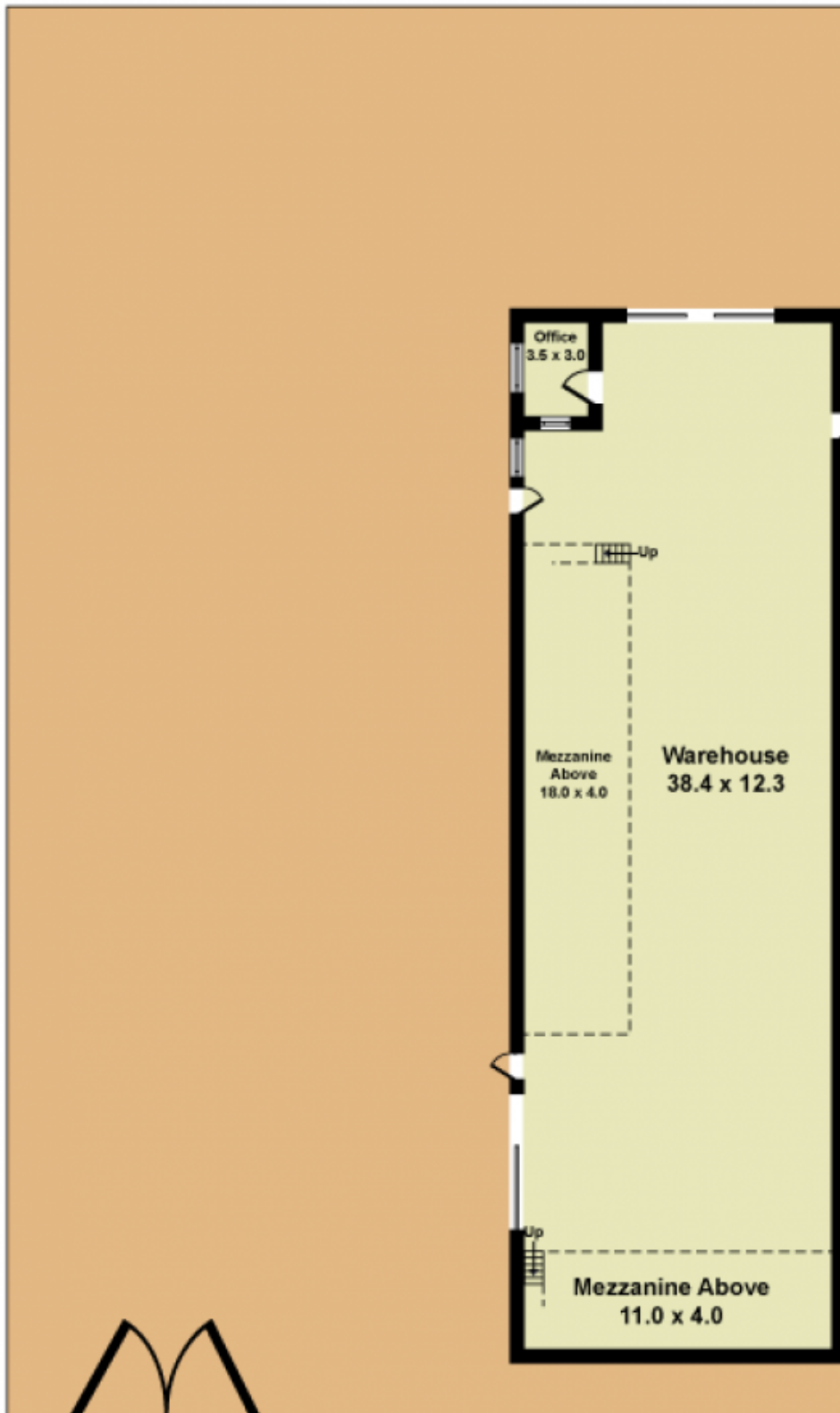


**Nick Christopoulos**  
03 9313 7888



**Chinh Pham**  
03 9313 7888

[For full version visit the website](https://www.douglaskay.com.au)



Whilst every attempt has been made to ensure the accuracy of this floorplan, measurements of doors, windows, rooms and any other items are approximates only. The producer or agent cannot be held responsible for any errors, omissions or misstatements. This plan is for illustrative purposes only and should be used as such.