



142 Suspension Street Ardeer VIC

3 1 5

This classic mid-century weatherboard home offers an exceptional opportunity for both homebuyers and investors, set on a generous 604sqm flat block in a highly sought-after family neighbourhood. The property presents a pristine facade, complemented by a lush, green front lawn that creates a welcoming first impression. Upon entering, you're greeted by a spacious lounge, while the central kitchen, featuring a 900mm oven, flows seamlessly into a large dining area that overlooks the expansive north-facing rear yard. This is an ideal setting for outdoor entertaining and family gatherings.

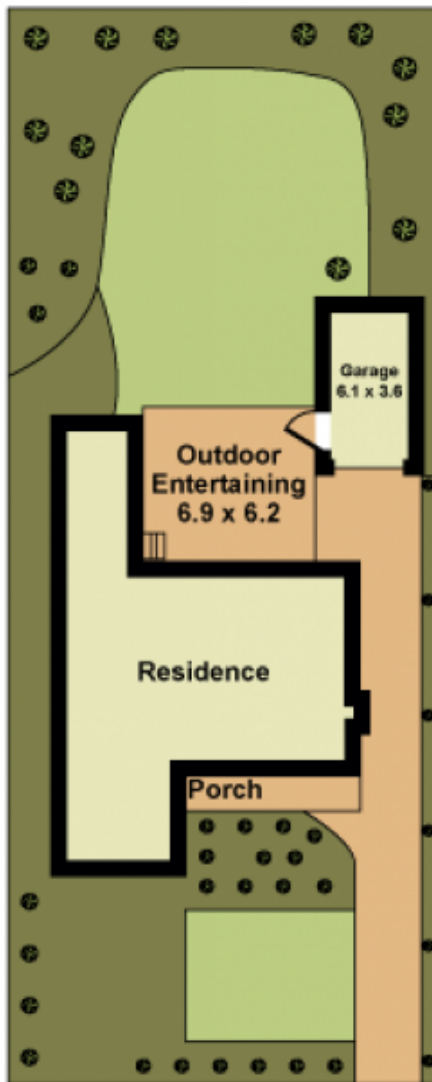
The home includes three comfortable bedrooms, all serviced by a light-filled central bathroom. Throughout, you'll find polished hardwood timber floorboards, along with

[For full version visit the website](https://www.douglaskay.com.au/sale/vic/west/ardeer/residential/house/8180654)

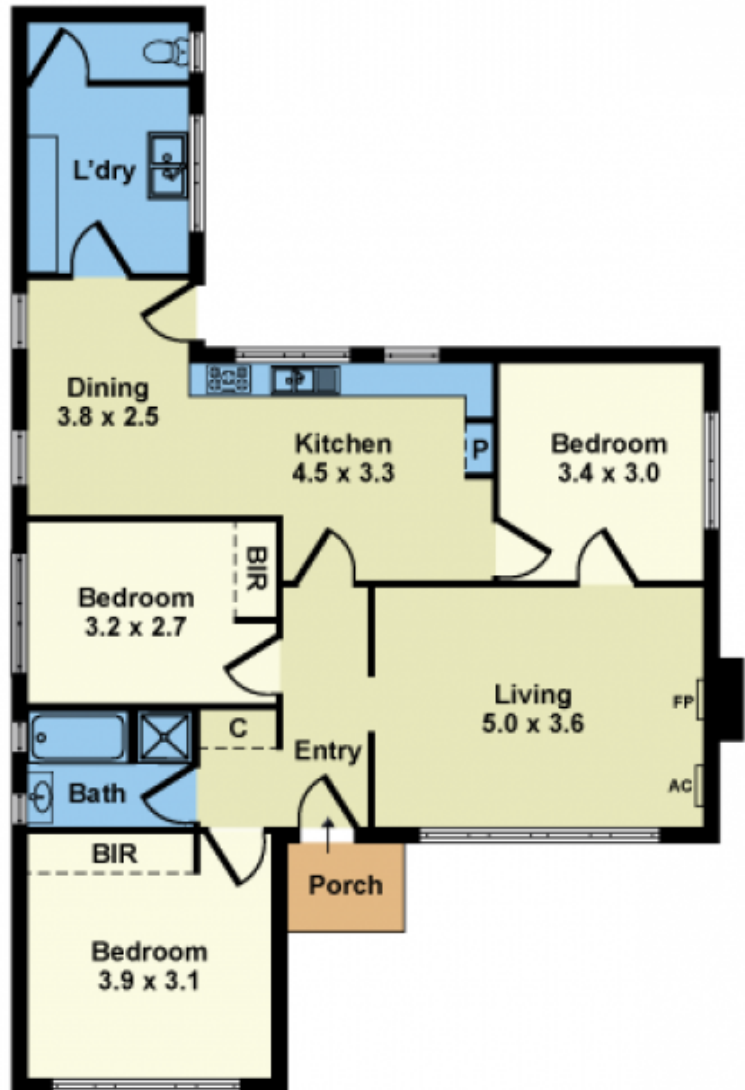
Type : House
Price : \$590,000 - \$640,000
Land Size : 604 sqm
View : <https://www.douglaskay.com.au/sale/vic/west/ardeer/residential/house/8180654>



Justin Luciew
03 9313 7888



SITE PLAN



FLOOR PLAN

Whilst every attempt has been made to ensure the accuracy of this floorplan, measurements of doors, windows, rooms and any other items are approximates only. The producer or agent cannot be held responsible for any errors, omissions or misstatements. This plan is for illustrative purposes only and should be used as such.